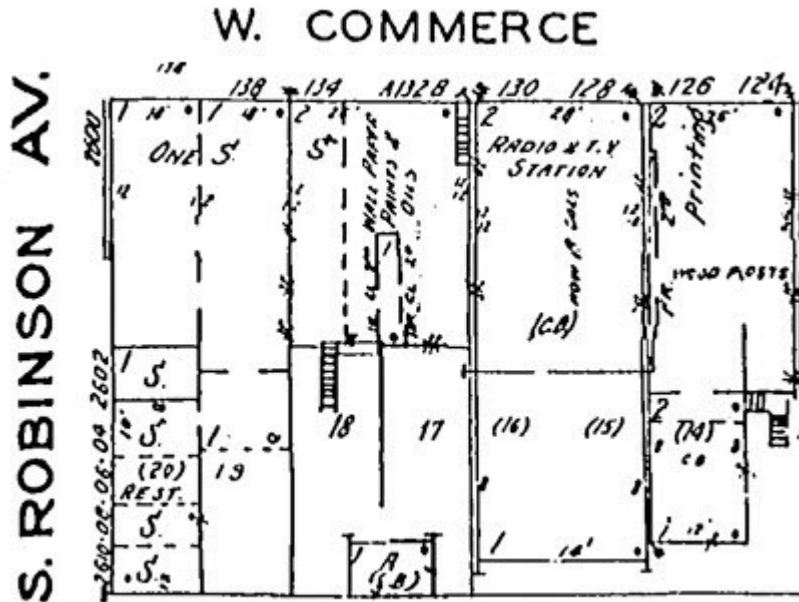


Re: Historic Capitol Hill

Here's something I learned as a result of looking at a 1955 Sanborn map, a crop of which is shown below ...



Huh? A radio & tv station at 128 Commerce (probably 128 1/2 above the 1st floor Beacon newspaper's address)? That sent me looking into the Oklahoman's archives to figure this neat information out. Here's what I found.

In [a 11/29/1946 article](#), it was reported that a new radio station, KLPR, had been authorized by the FCC. Shortly after, the 12/20/1946 article below reported that the station would be operating out of Capitol Hill ...

Radio Station To Be Opened In Capitol Hill

Civic-minded Capitol Hill will have its own radio station, starting operations about March 1, Byrne Ross, station owner, said Thursday. ➡

The station, to be known as KLPR, is licensed for broadcasting from sun-up to sundown and will feature hourly newscasts, transcribed and live music shows and sports events.

Ross, who built Lawton's station SWO in 1940, said the new station's letters were for his parents, Kate Ross and Col. Leslie P. Ross.

Ross Pioneer Attorney

Col. Ross, an Arkansas lawyer who arrived in Oklahoma City during the run, was the first city attorney of south Oklahoma City, and receiver of the land office under Pres. Cleveland from 1892 to 1896.

He also ran in the 1910 gubernatorial race against Lee Cruce and W. "Alfalfa Bill" Murray on a local option platform. Cruce was elected governor.

A ship assigned the call letters KLPR was asked by the maritime commission to release them and did so, Ross said, in explaining his new station's signal.

Local Programs Stressed

At every station break the call will identify the new independent as "The friendly voice of Capitol Hill," the manager said.

In all probability the studios will be housed with the Capitol Hill chamber of commerce in the new offices to be found this month. Plans have been submitted to the city planning commission for construction of a transmitting station in Capitol Hill.



Byrne Ross

The above article opined that the station might/would likely be located in the Capitol Hill Chamber's facility, but that didn't happen. Instead, it located at 128 (probably 128 1/2) Commerce.